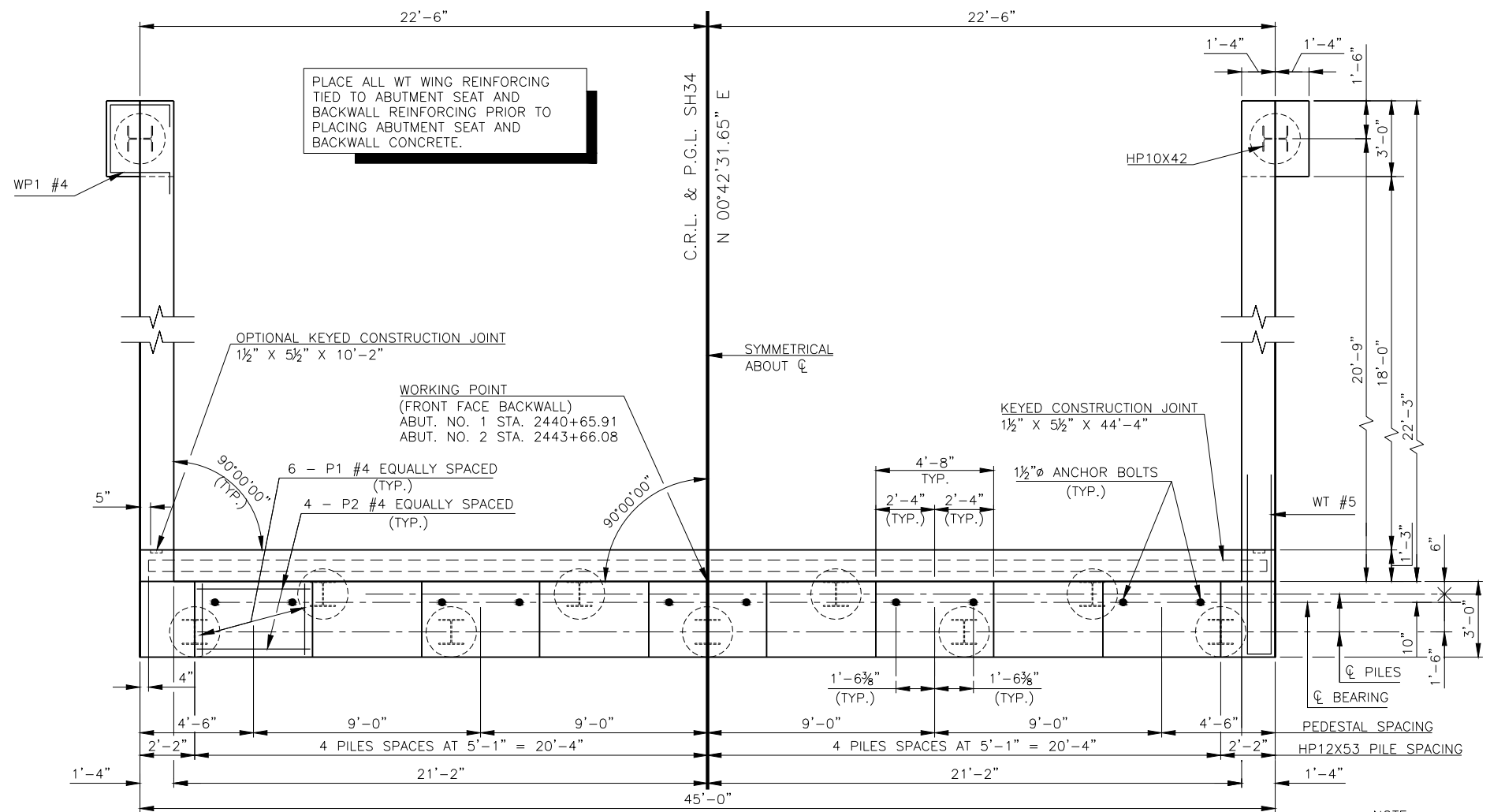
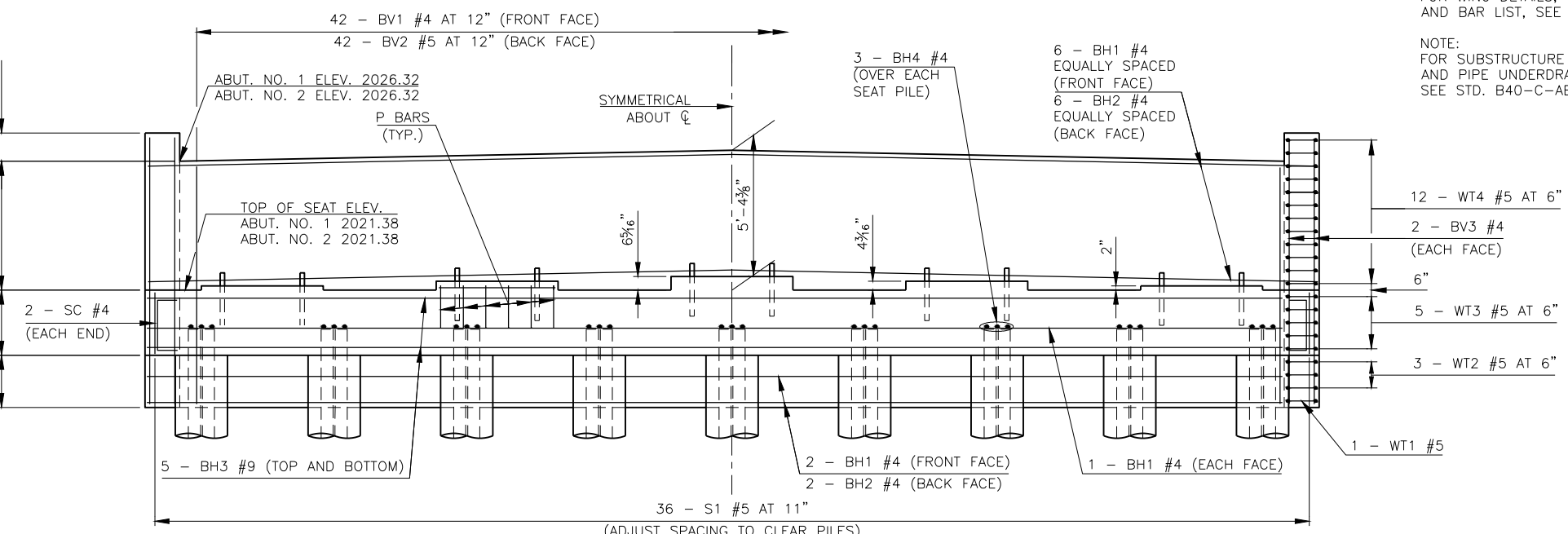


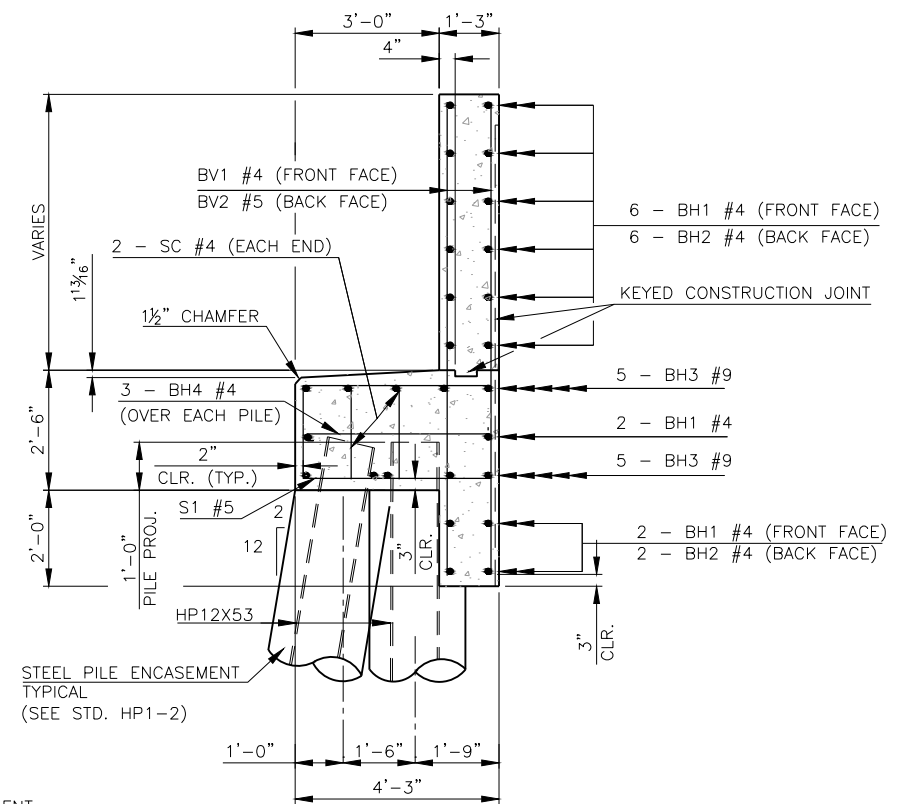
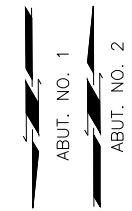
DESCRIPTION	REVISIONS	DATE



**ABUTMENT PLAN**  
(ABUTMENT NO. 1 AND 2 SHOWN)



**ABUTMENT ELEVATION**  
(ABUTMENT NO. 1 AND 2 SHOWN)



**SECTION THRU SEAT**

NOTE:  
FOR EXTENT OF WATER REPELLENT TREATMENT, SEE SHEET 31.

NOTE:  
FOR WING DETAILS, BAR BENDS, AND BAR LIST, SEE SHEET 26.

NOTE:  
FOR SUBSTRUCTURE EXCAVATION AND PIPE UNDERDRAIN DETAILS, SEE STD. B40-C-ABUT-MISC.

ABUTMENT QUANTITIES				
ITEM	UNIT	ABUT. NO. 1	ABUT. NO. 2	TOTAL
SUBSTRUCTURE EXCAVATION COMMON	C.Y.	100	100	200
CLSM BACKFILL	C.Y.	105	105	210
CLASS A CONCRETE	CY.	48.5	48.5	97.0
EPOXY COATED REINFORCING STEEL	LB.	5,720	5,720	11,440
PILES, FURNISHED (HP10X42)	L.F.	236	196	432
PILES, FURNISHED (HP12X53)	L.F.	1,029	858	1,887
PILES, DRIVEN (HP10X42)	L.F.	236	196	432
PILES, DRIVEN (HP12X53)	L.F.	1,029	858	1,887
WATER REPELLENT (VISUALLY INSPECTED)	S.Y.	59	59	118
TYPE I-A PLAIN RIPRAP	TON	702	581	1,283
TYPE I-A FILTER BLANKET	TON	158	131	289
6" PERFORATED PIPE UNDERDRAIN ROUND	L.F.	42	42	84
6" NON - PERF. PIPE UNDERDRAIN RND.	L.F.	34	34	68

THIS DRAWING IS PRELIMINARY IN NATURE. IT IS NOT A FINAL SIGNED AND SEALED DRAWING

DESIGN	J.W.H.	SH34 OVER N. PERSIMMON CREEK	WOODWARD COUNTY
DRAWN	Z.M.B.	BRIDGE A	
CHECKED	J.W.H.	<b>ABUTMENT DETAILS</b>	
APPROV.	T.A.C.		
SQUAD	CEC		
		JOB PIECE NO. 28827(04)	SHEET NO. 25